

NJ Stroke Coordinator Consortium

Laura Reilly, MSN, RN, CCRN, CNRN
*Atlantic Neuroscience Institute
Morristown Memorial Hospital*

Angela McCall-Brown, RN, MSN
*Atlantic Neuroscience Institute
Overlook Hospital*



THE PASSION TO LEAD



Presenter Disclosure Information

- ▶ **FINANCIAL DISCLOSURE:**
Genentech Speakers Bureau
- ▶ **UNLABELED/UNAPPROVED USES DISCLOSURE:**
None

THE PASSION TO LEAD



Atlantic Neuroscience Institute Atlantic Health; New Jersey

Overlook Hospital

▲ Summit, NJ

- ▲ 340 bed community based tertiary care hospital
- ▲ Brain Tumor Center
- ▲ Epilepsy program
- ▲ Neuro-interventional Radiology
- ▲ Cyberknife

Morristown Memorial Hospital

▲ Morristown, NJ

- ▲ 650 bed community based tertiary care hospital
- ▲ Designated level 2 trauma center / Verified Level 1
- ▲ Magnet certification since 2002

TJC Designated Primary Stroke Centers 2006

NJ DOHSS Comprehensive Stroke Centers 2007

ASA Bronze Award 2007

ASA Silver Award 2008

T H E P A S S I O N T O L E A D



Today's Objectives

NJ Stroke Coordinators Consortium (NJSCC)



Developing the idea
Obtaining financial support
Spreading the word
First meeting/ Setting the agendas
Outcomes
Looking to the future...

If you chase perfection you often catch excellence...

T H E P A S S I O N T O L E A D

Developing the idea....

- ▶ **Drawing from my own experiences**
 - ▶ **Struggles as a new stroke coordinator**
 - ▶ **Looking for collegial support for people who “walk in my shoes”**
- ▶ **Assisting others**
 - ▶ **As our program progressed others reached out for guidance**
- ▶ **Why reinvent the wheel?**
 - ▶ **Time limitations/ too much to do and not...**
 - ▶ **Share resources**

T H E P A S S I O N T O L E A D

Obtaining Financial Support

- ▶ **The North Eastern Cerebrovascular Consortium “The NECC”**
- ▶ **American Heart/American Stroke Association**
- ▶ **Genentech (Independent Medical Education Department) IMED Grant**
- ▶ **Various small donations through display table fees**



Grant Proposal Objectives

- ▶ **Develop an organized network of New Jersey stroke program coordinators.**
- ▶ **Collaborate to address the challenges in implementing best practices among New Jersey stroke centers.**

T H E P A S S I O N T O L E A D

Spreading the Word

- ▶ **Compiling the list of coordinators**
 - ▶ **ASA/AHA Representatives**
 - ▶ **Manufacturing and pharmaceutical representatives**
 - ▶ **NJ Coordinators**
- ▶ **Sending out an e letter with a “You’re Invited” and “Save the Date”**
 - ▶ **Frequent reminders**
 - ▶ **Open enrollment**
 - ▶ **“Leave no man (woman) behind”**

T H E P A S S I O N T O L E A D

First Meeting / Setting the Agendas

- ▶ **Location - Overlook Hospital**
- ▶ **2-hour luncheon**
- ▶ **46 attendees**
- ▶ **Horseshoe table set-up with flipcharts**
- ▶ **Around the room discussion**
 - ▶ **Introduction**
 - ▶ **Program strengths**
 - ▶ **Biggest challenges**
- ▶ **Set the agenda for future meetings**
 - ▶ **Location/Date/Time**
 - ▶ **Quarterly meetings**
 - ▶ **New Jersey Hospital Association; 10am – 2pm**
 - ▶ **Data Management Session (select one)**
 - ▶ **Get with the Guidelines**
 - ▶ **Non-Get with the Guidelines**
 - ▶ **Work Shops (select one) – Co-leaders / Consultants**
 - ▶ **Quality Indicators**
 - ▶ **Community Outreach**
 - ▶ **Staff Education**

T H E P A S S I O N T O L E A D



Outcomes

What does success look like?

| Meeting Date | No. of Total Attendees | % of attendees Stroke Coordinators |
|---------------------|-------------------------------|---|
| January 25, 2008 | 46 | Not Available |
| March 12, 2008 | 42 | 67% |
| June 10, 2008 | 41 | 74% |
| September 29, 2008 | 49 | 62% |

T H E P A S S I O N T O L E A D

46 Participating Hospitals/Centers

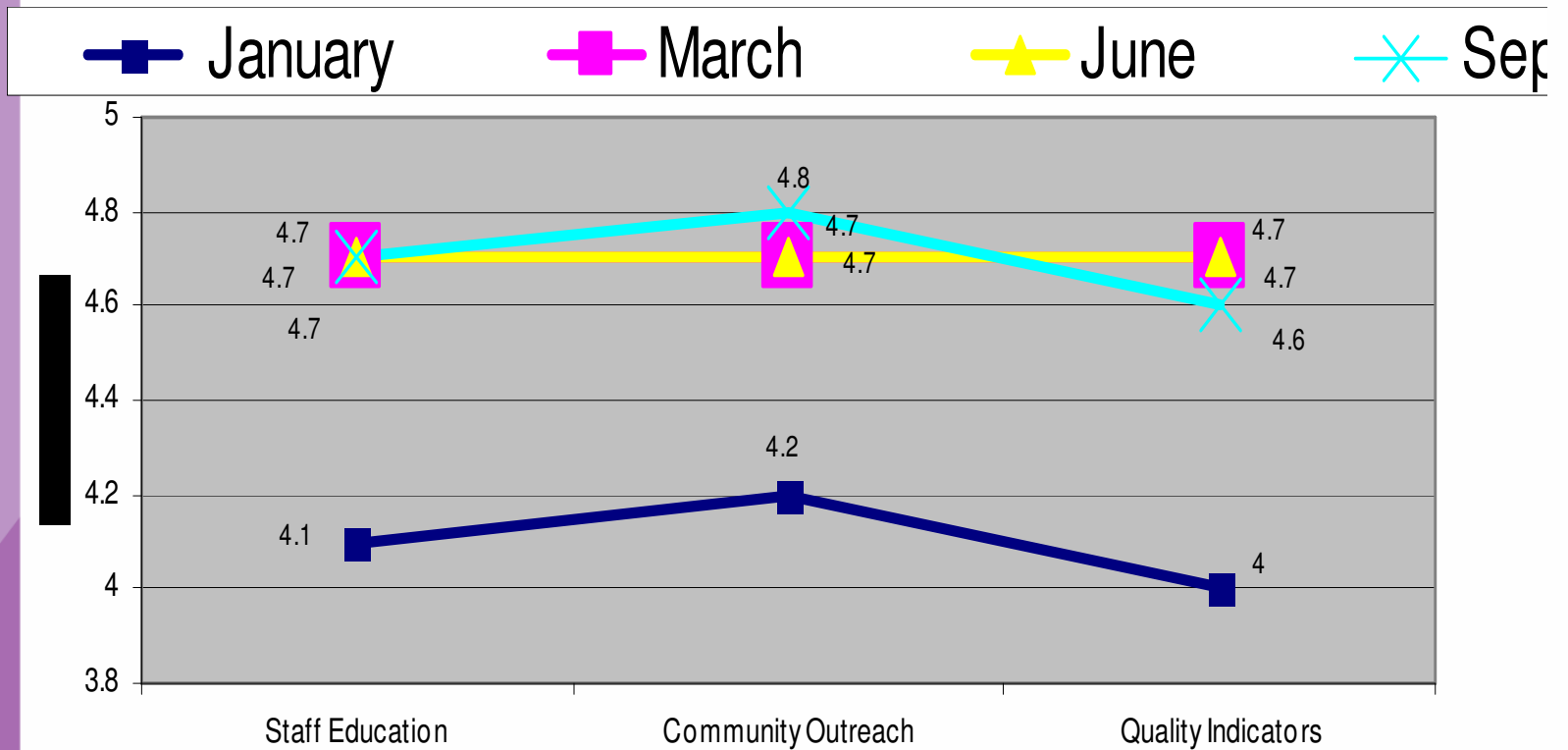
| | |
|--|---|
| AtlantiCare Regional M.C. City Division | <i>R.W.J. University Hospital</i> |
| AtlantiCare Regional M.C. Mainland Division | <i>R.W.J. University Hospital at Hamilton</i> |
| Bayshore Community Hospital | <i>R.W.J. University Hospital at Rahway</i> |
| CentraState Medical Center | <i>Raritan Bay Medical Center - Perth Amboy</i> |
| Chilton Memorial Hospital | <i>Riverview Medical Center</i> |
| Clara Maass Medical Center | <i>Saint Barnabas Medical Center</i> |
| Cooper Hospital/University Medical Center | <i>Saint Clare's Hospital - Boonton/Denville</i> |
| East Orange General Hospital | <i>Saint Clare's Hospital - Dover</i> |
| Hackensack University Medical Center | <i>Saint Peter's University Hospital</i> |
| Hackettstown Regional Medical Center | <i>Somerset Medical Center</i> |
| Holy Name Hospital | <i>South Jersey Healthcare - Elmer Hospital</i> |
| J.F.K. Medical Center | <i>South Jersey Regional Medical Center</i> |
| Kennedy Memorial Hospital (Cherry Hill) | <i>Southern Ocean County Hospital</i> |
| Jersey Shore University Medical Center | <i>St. Francis Medical Center (Trenton)</i> |
| Kimball Medical Center | <i>St. Joseph's Regional Medical Center</i> |
| Monmouth Medical Center | <i>Trinitas Hospital</i> |
| Morristown Memorial Hospital | <i>Valley Hospital</i> |
| Mountainside Hospital | <i>Virtua Health - Memorial Hospital of Burlington County</i> |
| Newark Beth Israel Medical Center | <i>Virtua Health - West Jersey Hospital (Berlin)</i> |
| Newton Memorial Hospital | <i>Virtua Health - West Jersey Hospital (Marlton)</i> |
| Ocean Medical Center | <i>Virtua Health - West Jersey Hospital (Voorhees)</i> |
| Our Lady of Lourdes Medical Center | <i>Atlantic Rehabilitation Institute</i> |
| Overlook Hospital | <i>Kessler Rehabilitation Institute</i> |

Post Meeting Evaluations

- ▶ **Distributed immediately following each meeting.**
- ▶ **The evaluation questions measured the effectiveness of the meetings to provide support in three main areas imperative to stroke program success 1) community outreach, 2) staff education, and 3) stroke quality indicators.**
- ▶ **Scored using a Likert scale**
 - ▶ **A score of 5 was given for “strongly agree” and a score of 1 for “strongly disagree”.**

NJSCC Evaluation Results

NJ Stroke Coordinators Survey Results

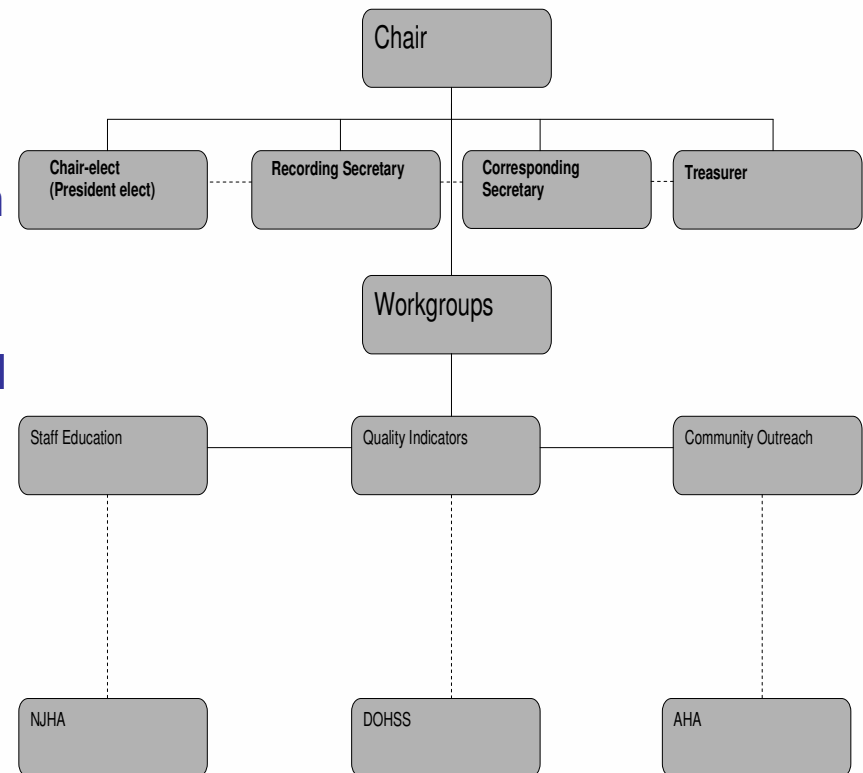


THE PASSION TO LEAD

Looking to the future....

- **Continue quarterly meetings.**
- **Seek grant funding to support the upcoming year.**
- **Formalize leadership with nominated officers.**
- **Continue collaborative efforts with AHA/ASA and DOHSS.**
- **Continue measuring effects through established goals and measurable outcomes.**

NJ Stroke Coordinator Consortium Organizational Chart
(proposed)



THE PASSION TO LEAD

Ending Note...

“What I’ve realized in developing this group is that nurses are very passionate. They don’t really care about the competition and they don’t really care about the politics – nurses want to take good care of patients. When we come together, we’re a powerful group”

Hilton. L (2008) Not just a stroke of luck. *Nursing Spectrum* (July 28); 120.175; p. 8,9.

T H E P A S S I O N T O L E A D



Thank You

Laura Reilly, MSN, RN, CCRN, CNRN
MMH Stroke Program Coordinator
973-971-4312
laura.reilly@atlanticealth.org

T H E P A S S I O N T O L E A D